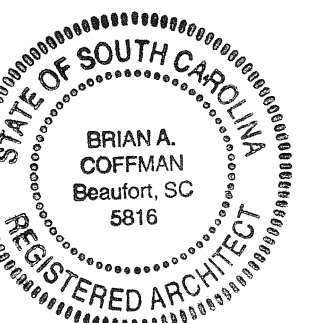
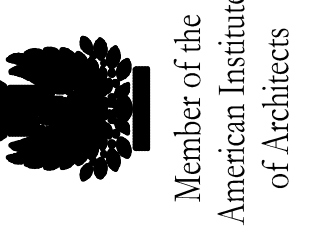


USC SALKEHATCHIE ALLENDALE ENTRANCE SIGN CONSTRUCTION

BURTON'S FERRY HIGHWAY (HWY 301)
ALLENDALE, SOUTH CAROLINA

PROJECT NUMBER: CP00400055

REVISIONS			
NO.	DATE	DESCRIPTION	APPR.



**ARCHITECTS
ENGINEERS**

**BES
INCORPORATED**

2712 Bull St., Beaufort, SC 29902 PH: 843-522-2094 FX: 843-522-2096 www.besbeaufort.com

INDEX OF DRAWINGS		
SHEET #	DRAWING	DRAWING TITLE
1	T101	TITLE SHEET AND SITE PLAN
2	A101	PLANS, ELEVATIONS AND SECTIONS

GENERAL NOTES

1. THE CONSTRUCTION DRAWINGS LISTED ON THIS SHEET ARE FOR USE IN BIDDING AND CONSTRUCTION TO COMPLETE THE WORK INDICATED.
2. CONSTRUCTION ADMINISTRATION SERVICES FOR THE PROJECT ARE NOT PROVIDED BY BES, INC. UNDER THE CURRENT CONTRACT, BUT MAY BE COMPLETED UPON WRITTEN REQUEST OF THE OWNER AS AN ADDITIONAL SERVICES.
3. THE CONTRACTOR SHALL BE RESPONSIBLE FOR APPLICATION, PROCUREMENT, AND APPLICABLE FEES REQUIRED TO RECEIVE A BUILDING PERMITS AND REGULATORY APPROVALS AS NECESSARY.

LEGEND

- REVISION TAG
- DIRECTION OF SECTION
- NUMBER OF SECTION
SHEET ON WHICH SECTION IS SHOWN
SHEET ON WHICH SECTION IS ORIGINATED
- NUMBER OF DETAIL
SHEET WHERE CONDITION IS DETAILED
SHEET WHERE CONDITION OCCURS
- DETAIL NUMBER
DETAIL SYMBOL
DRAWING WHERE DETAIL APPEARS

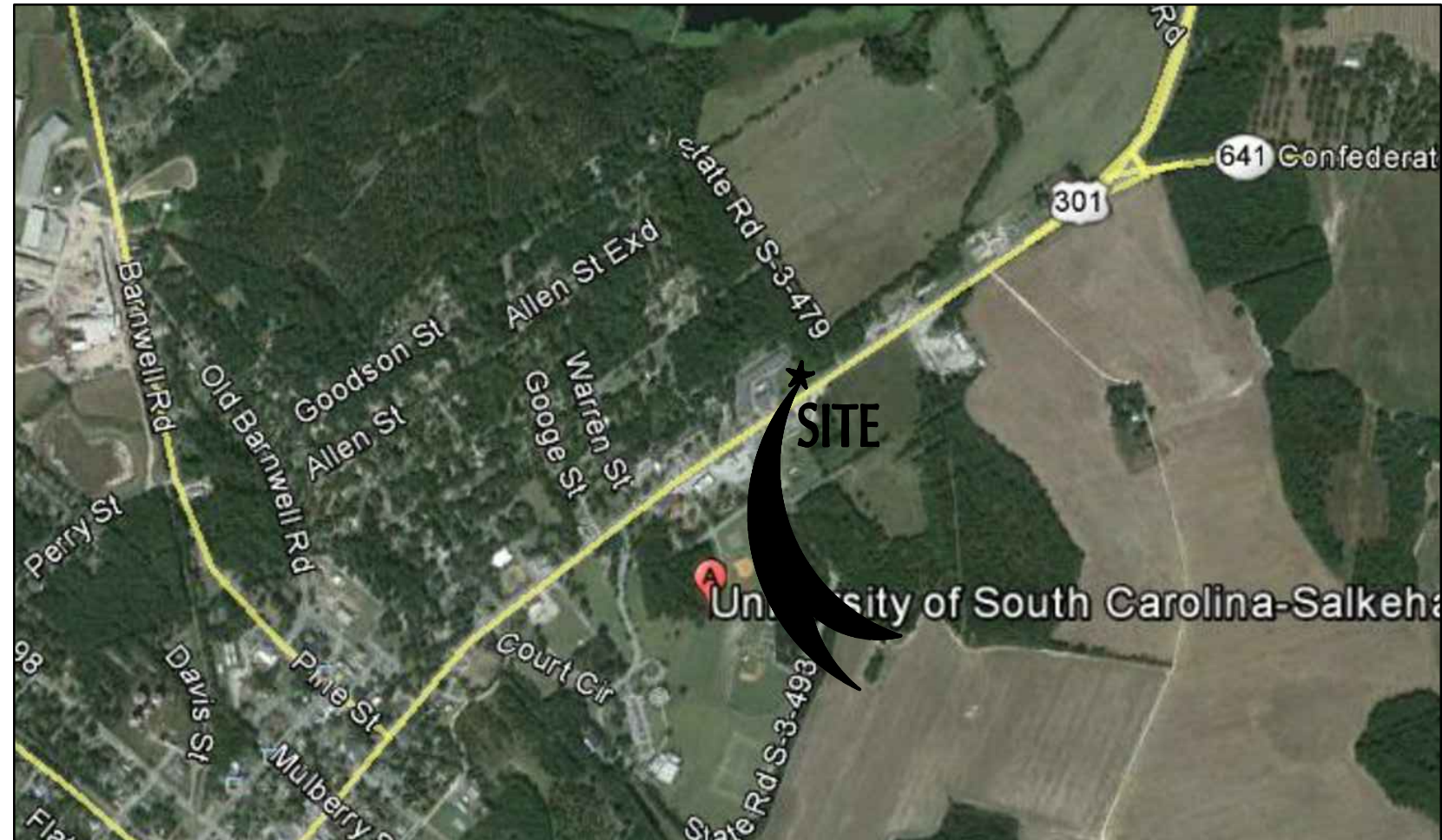
ABBREVIATIONS

BM	BEAM
BOTT	BOTTOM
DBL	DOUBLE
DWGS	DRAWINGS
EA	EACH
ELEV	ELEVATION
EX, EXIST	EXISTING
EXT	EXTERIOR
FIN	FINISH
FLR	FLOOR
FRTW	FIRE RETARDANT TREATED WOOD
FT	FEET
GA	GAUGE
HGT	HEIGHT
HVAC	HEATING VENTILATION AND AIR CONDITION
IN	INCHES
MAX	MAXIMUM
MIN	MINIMUM
MTL	METAL
N/A	NOT APPLICABLE
NIC	NOT IN CONTRACT
#, NO.	NUMBER (QUANTITY)
NON-COM	NON-COMBUSTIBLE
NTS	NOT TO SCALE
QTY	QUANTITY
REQ'D	REQUIRED
SCHD	SCHEDULE
SPECS	SPECIFICATION
STRUCT	STRUCTURAL
TYP	TYPICAL
UNO	UNLESS NOTED OTHERWISE
W/	WITH

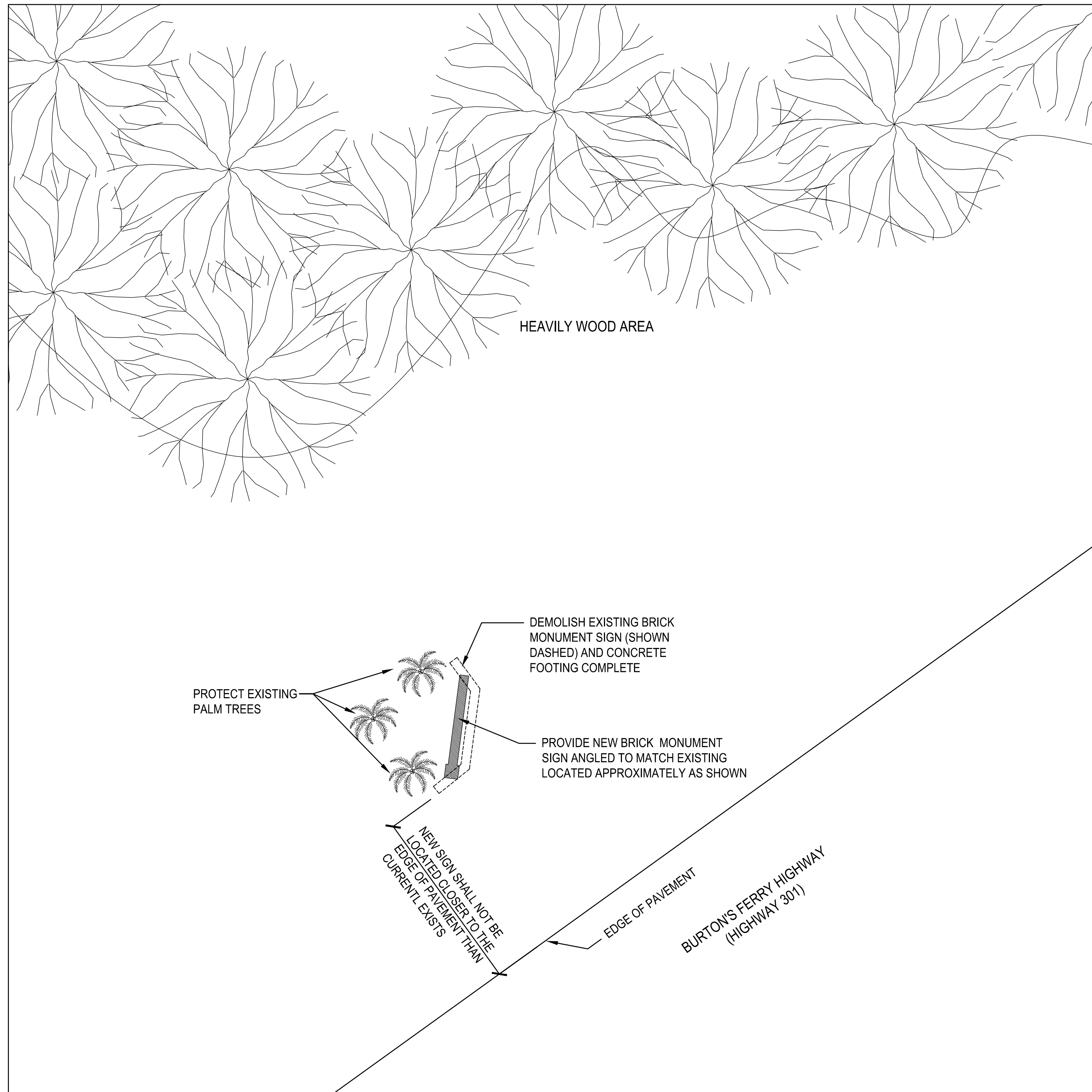


EXISTING SIGN TO BE DEMOLISHED
NOT TO SCALE

- NOTES:**
1. DEMOLISH EXISTING BRICK WALL AND CONCRETE FOOTINGS COMPLETE. EXISTING SIGN WALL IS APPROXIMATELY 15'-4" LONG x 12" WIDE x 6'-0" HIGH.
 2. BACKFILL AND COMPACT SOILS TO ACHIEVE PROPER COMPACTION UNDER NEW FOOTING. SEE GENERAL NOTES ON SHEET A101 FOR ADDITIONAL INFORMATION.
 3. AFTER CONSTRUCTION BACKFILL TO EXISTING GRADES AND TO PROVIDE POSITIVE DRAINAGE AWAY FROM THE STRUCTURE. RE-SEED GRASSED AREAS DAMAGED DURING CONSTRUCTION BACK TO ORIGINAL CONDITIONS.
 4. PROTECT (3) EXISTING PALM TREES FROM DAMAGE DURING DEMOLITION AND CONSTRUCTION.



LOCATION MAP
NOT TO SCALE



1 SITE PLAN
1/8" = 1'-0"

- GENERAL NOTES:**
1. CONTRACTOR SHALL BE RESPONSIBLE FOR FIELD VERIFYING FINAL LOCATION OF NEW SIGN ON SITE.
 2. CONTRACTOR SHALL REQUEST REVIEW AND APPROVAL BY OWNER ON SIGN LAYOUT PRIOR TO START OF CONSTRUCTION.

TITLE SHEET AND SITE PLAN

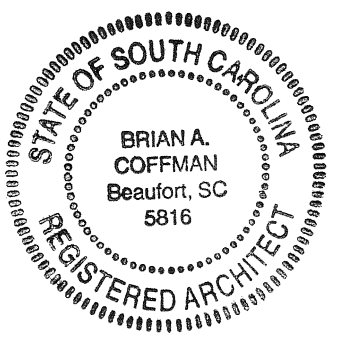
USC SALKEHATCHIE
ALLENDALE ENTRANCE SIGN CONSTRUCTION

BURTON'S FERRY HIGHWAY (HWY 301), ALLENDALE, SC
DRAWN BY: R. WASHINGTON
DATE: JUNE 5, 2014
APPR. BY: B. COFFMAN
BES JOB NO. 2014.015.00

SHEET
T101

REVISIONS

NO.	DATE	DESCRIPTION	APPR.



**ARCHITECTS
ENGINEERS**

**BES
INCORPORATED**

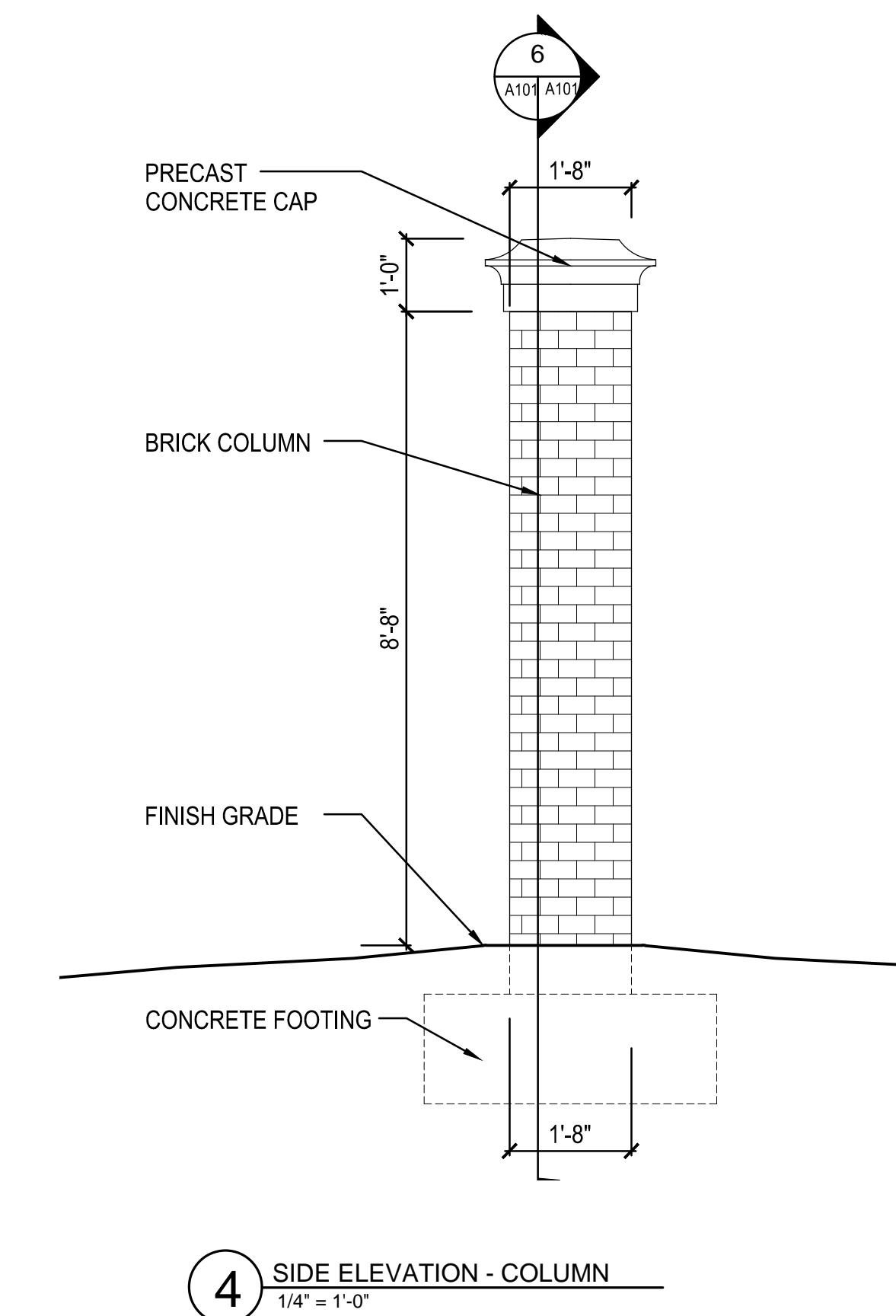
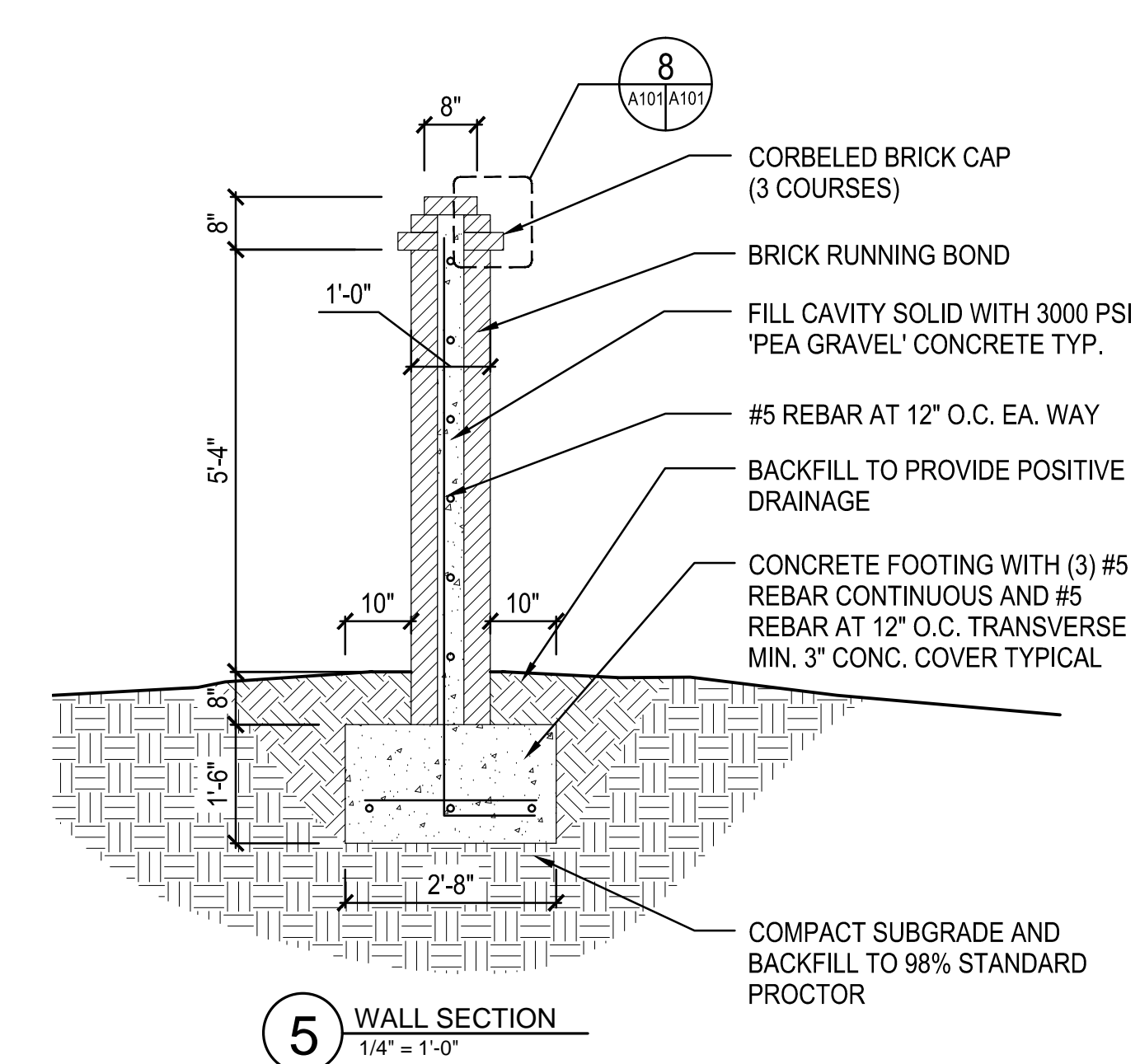
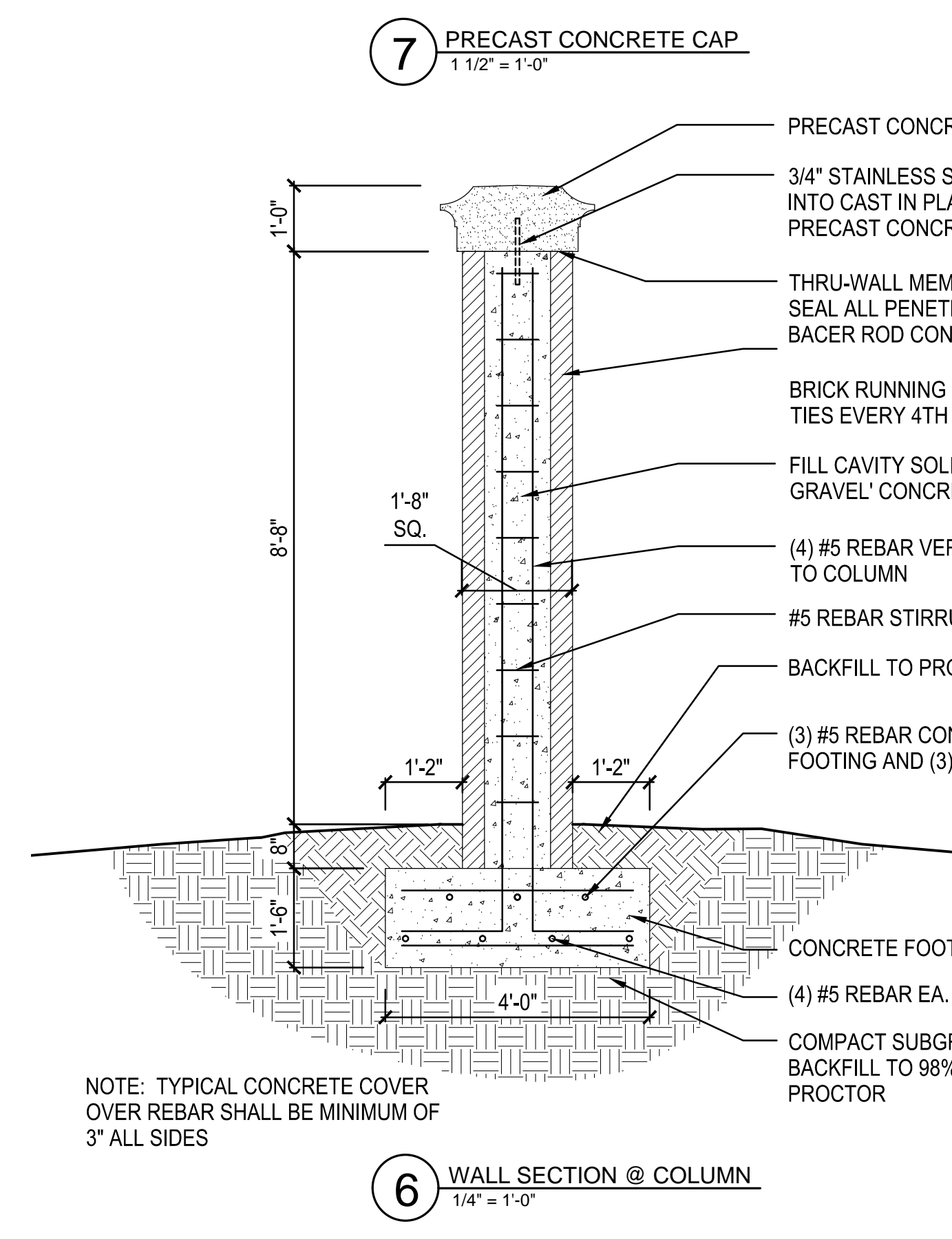
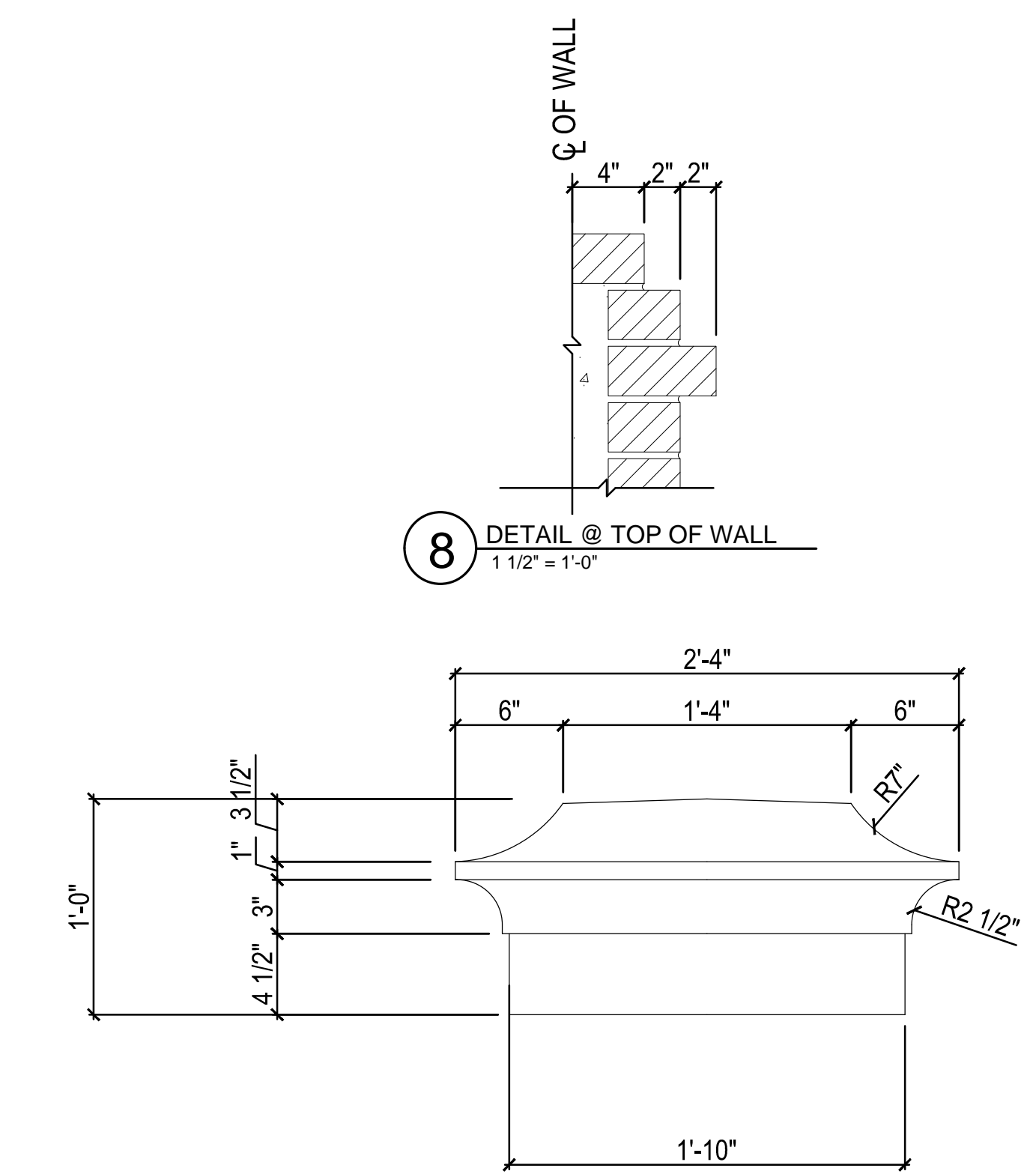
2712 Bull St., Beaufort, SC 29902 PH: 843-522-2094 FX: 843-522-2096 www.besbeaufort.com

PLANS, ELEVATIONS AND SECTIONS

USC SALKEHATCHIE
ALLENDALE ENTRANCE SIGN CONSTRUCTION

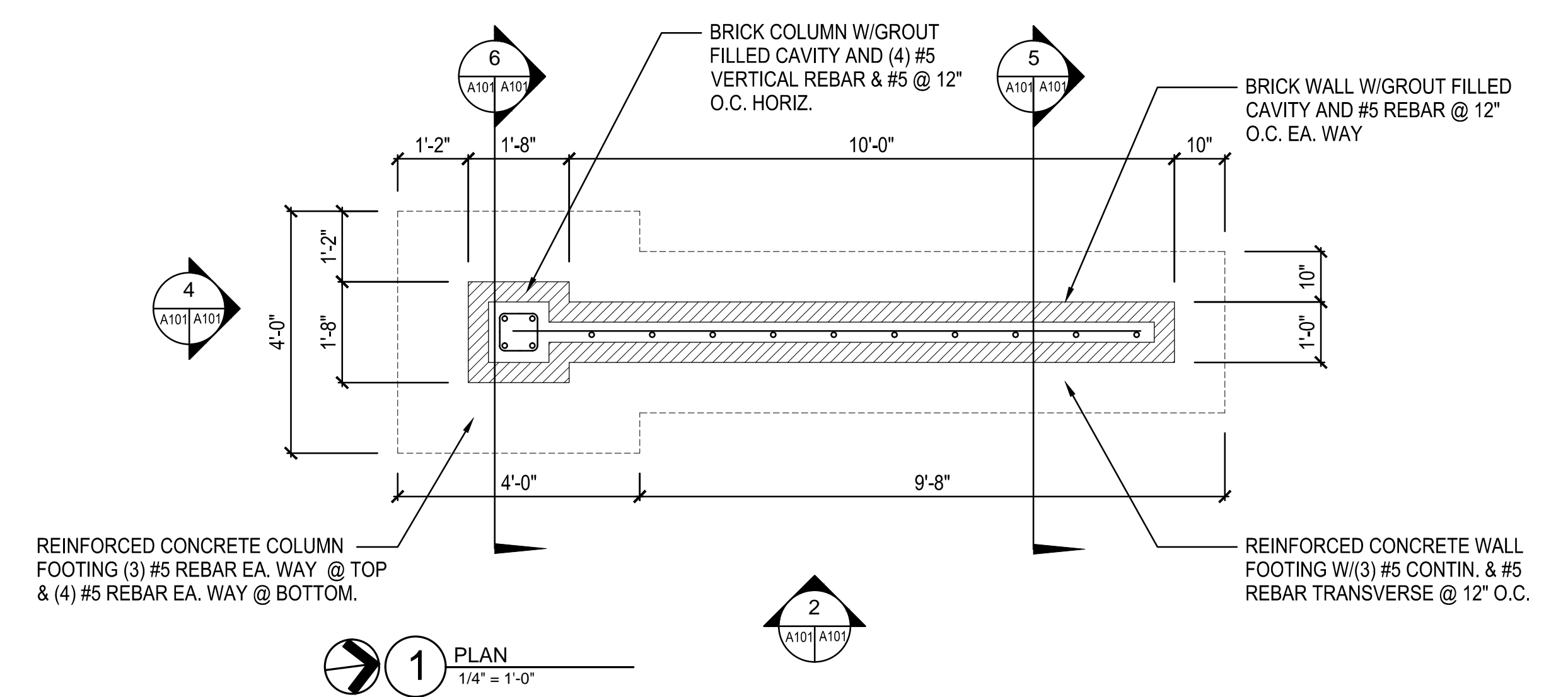
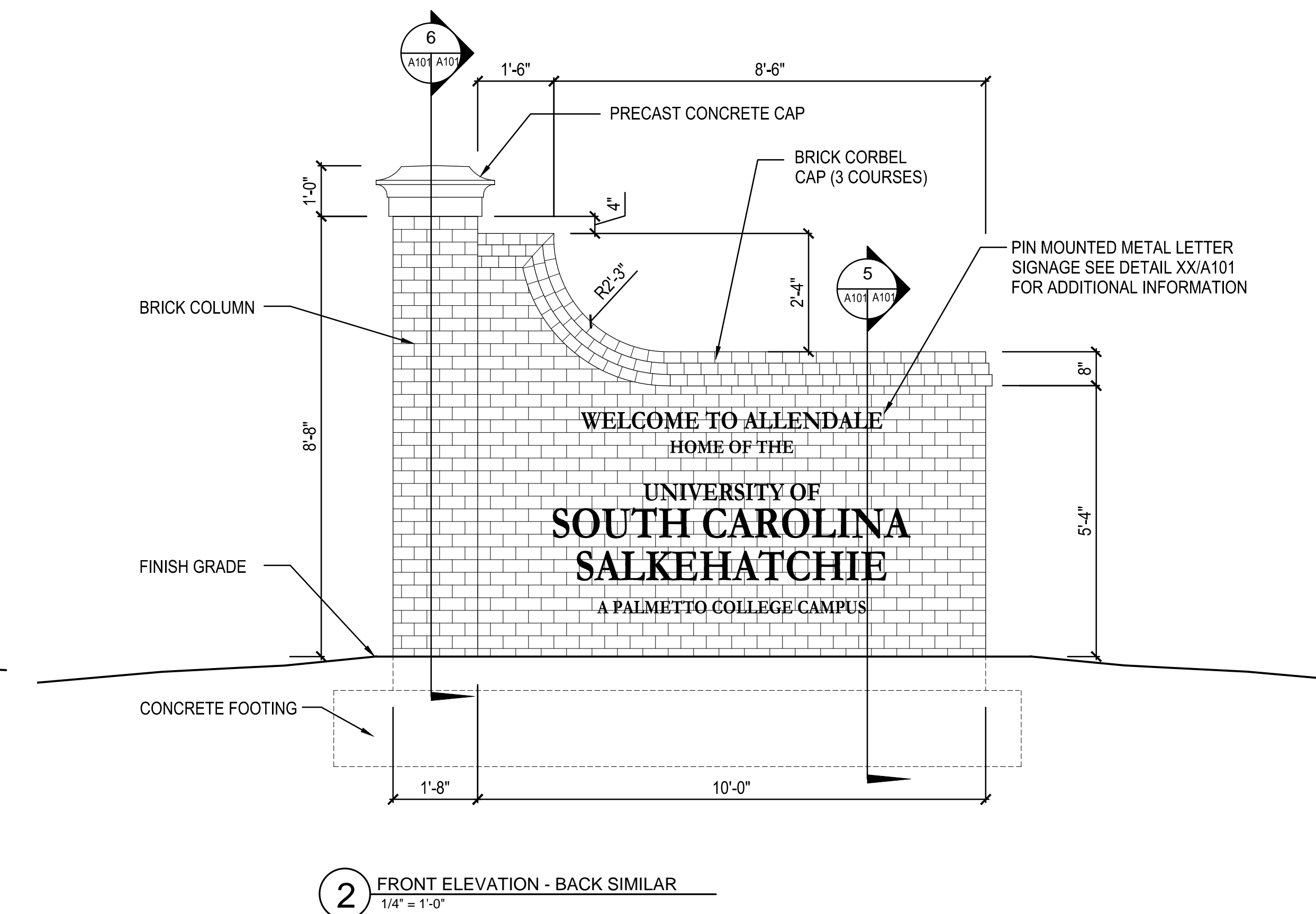
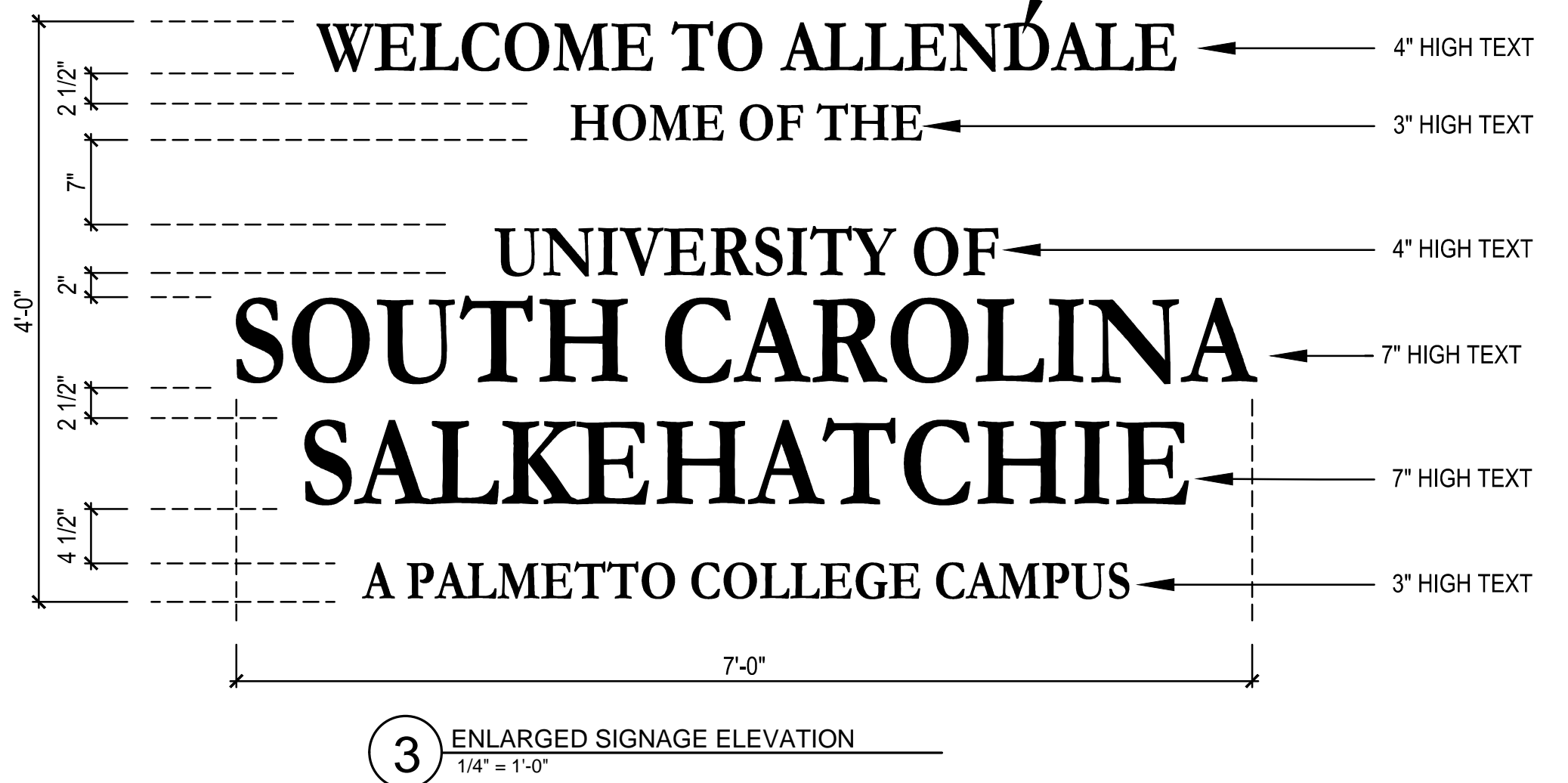
USC PROJECT NO. CP00400055
DRAWN R. WASHINGTON
DATE JUNE 5, 2014
APPR. B. COFFMAN
BES JOB NO. 2014-015-00

SHEET
A101



MOUNT LETTERING TO BRICK WALL WITH ANCHORS AND FASTENERS AS PER LETTERING MANUFACTURER STANDARD WRITTEN INSTRUCTIONS.

SUBMIT SHOP DRAWINGS INDICATING LAYOUT, LETTERING AND MOUNTING CONDITIONS FOR APPROVAL BY USC PRIOR TO START OF CONSTRUCTION



PRECAST CONCRETE CAP (SEE 7/A101)

3/4" STAINLESS STEEL DOWEL EMBED MIN. 6" INTO CAST IN PLACE CONCRETE AND PRECAST CONCRETE CAP

THRU-WALL MEMBRANE FLASHING UNDER CAP. SEAL ALL PENETRATIONS. APPLY SEALANT AND BACER ROD CONTINUOUS AT PERIMETER

BRICK RUNNING BOND PROVIDE #3 WALL TIES EVERY 4TH COURSE

FILL CAVITY SOLID WITH 3000 PSI 'PEA GRAVEL' CONCRETE TYP.

(4) #5 REBAR VERTICAL CONTINUOUS FOOTING TO COLUMN

#5 REBAR STIRRUPS 12" O.C. HORIZONTAL

BACKFILL TO PROVIDE POSITIVE DRAINAGE

(3) #5 REBAR CONTINUOUS FROM WALL FOOTING AND (3) #5 REBAR TRANSVERSE

CONCRETE FOOTING

(4) #5 REBAR EA. WAY

COMPACT SUBGRADE AND BACKFILL TO 98% STANDARD PROCTOR

NOTE: TYPICAL CONCRETE COVER OVER REBAR SHALL BE MINIMUM OF 3" ALL SIDES

- GENERAL NOTES:**
- CAST-IN-PLACE CONCRETE COMPRESSIVE STRENGTH AT 28 DAYS: 3000 PSI FOR FOOTINGS. USE 3000 PSI "PEA GRAVEL" CONCRETE (GROUT) FOR CAVITY FILL.
 - FOOTINGS HAVE BEEN DESIGNED FOR AN ASSUMED SOIL BEARING CAPACITY OF 2500 PSF. GENERAL CONTRACTOR TO VERIFY BEARING CAPACITY HAS BEEN ACHIEVED PRIOR TO FOOTING PLACEMENT.
 - COMPACT UNDER FOOTING TO 98% STANDARD PROCTOR DENSITY
 - EXTEND WALL FOOTING REINFORCEMENT INTO COLUMN FOOTING 24" MIN.
 - EXTEND HORIZONTAL WALL REINFORCING 8" INTO COLUMN CORE.
 - BRICK SHALL BE PROVINCIAL COLLECTION - CALEDONIA MFR'D BY CAROLINA CERAMICS BRICK CO. OR OLD ENGLISH RUSTIC ROSE MFR'D BY HANSON BRICK.
 - MORTAR SHALL BE SAVANNAH IVORY MFR'D BY ARGOS USA CORP. OR APPROVED EQUAL
 - PRECAST CONCRETE CAP SHALL BE 'LIMESTONE' COLOR MANUFACTURED BY LUCAS CONCRETE PRODUCTS OR APPROVED EQUAL.
 - MORTAR AN PRECAST COLORS SHALL MATCH. PROVIDE SAMPLES FOR REVIEW AND APPROVAL PRIOR TO START OF CONSTRUCTION.
 - METAL LETTERING SHALL BE USC STANDARD REVIVAL 565 FONT WITH BRUSHED BRASS FINISH. SUBMIT SAMPLE FOR APPROVAL PRIOR TO START OF CONSTRUCTION.